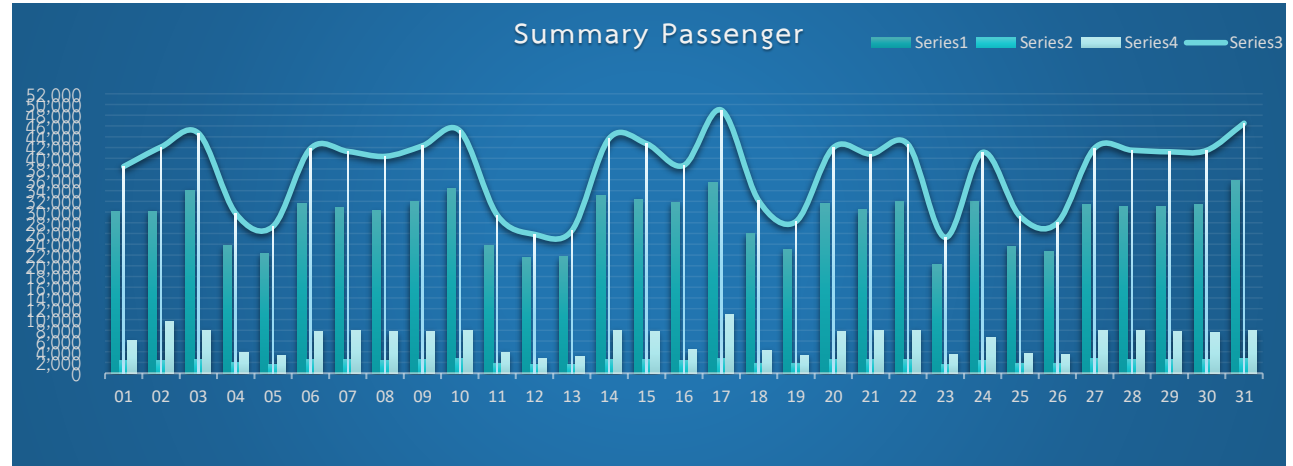


Red Line : Passenger Report Octoher 2025



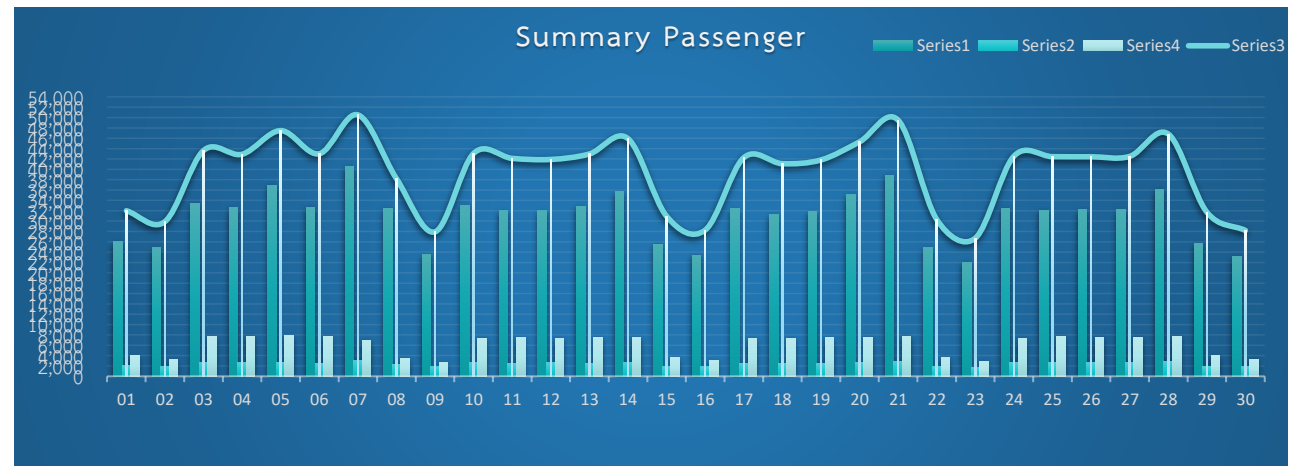
Date		Summary Passenger			
		North Line	West Line	GATE EMV KTB	Total
Wed	01-Oct-25	30,082	2,312	6,071	38,465
Thu	02-Oct-25	30,144	2,380	9,571	42,095
Fri	03-Oct-25	34,021	2,647	7,994	44,662
Sat	04-Oct-25	23,843	1,929	3,955	29,727
Sun	05-Oct-25	22,367	1,700	3,280	27,347
Mon	06-Oct-25	31,599	2,495	7,704	41,798
Tue	07-Oct-25	30,794	2,572	7,911	41,277
Wed	08-Oct-25	30,212	2,442	7,704	40,358
Thu	09-Oct-25	31,874	2,600	7,842	42,316
Fri	10-Oct-25	34,343	2,784	7,975	45,102
Sat	11-Oct-25	23,760	1,774	3,892	29,426
Sun	12-Oct-25	21,497	1,652	2,690	25,839
Mon	13-Oct-25	21,655	1,715	3,157	26,527
Tue	14-Oct-25	33,051	2,644	8,005	43,700
Wed	15-Oct-25	32,325	2,550	7,842	42,717
Thu	16-Oct-25	31,814	2,465	4,403	38,682
Fri	17-Oct-25	35,449	2,663	10,863	48,975
Sat	18-Oct-25	25,967	1,845	4,322	32,134
Sun	19-Oct-25	23,089	1,775	3,361	28,225
Mon	20-Oct-25	31,628	2,571	7,773	41,972
Tue	21-Oct-25	30,390	2,515	7,882	40,787
Wed	22-Oct-25	31,969	2,597	8,021	42,587
Thu	23-Oct-25	20,227	1,574	3,482	25,283
Fri	24-Oct-25	31,932	2,453	6,713	41,098
Sat	25-Oct-25	23,618	1,838	3,768	29,224
Sun	26-Oct-25	22,749	1,780	3,444	27,973
Mon	27-Oct-25	31,352	2,677	7,883	41,912
Tue	28-Oct-25	30,940	2,581	7,974	41,495
Wed	29-Oct-25	31,027	2,471	7,715	41,213
Thu	30-Oct-25	31,459	2,506	7,513	41,478
Fri	31-Oct-25	35,816	2,840	7,868	46,524
Total		900,993	71,347	198,578	1,170,918



Red Line : Passenger Report November 2025



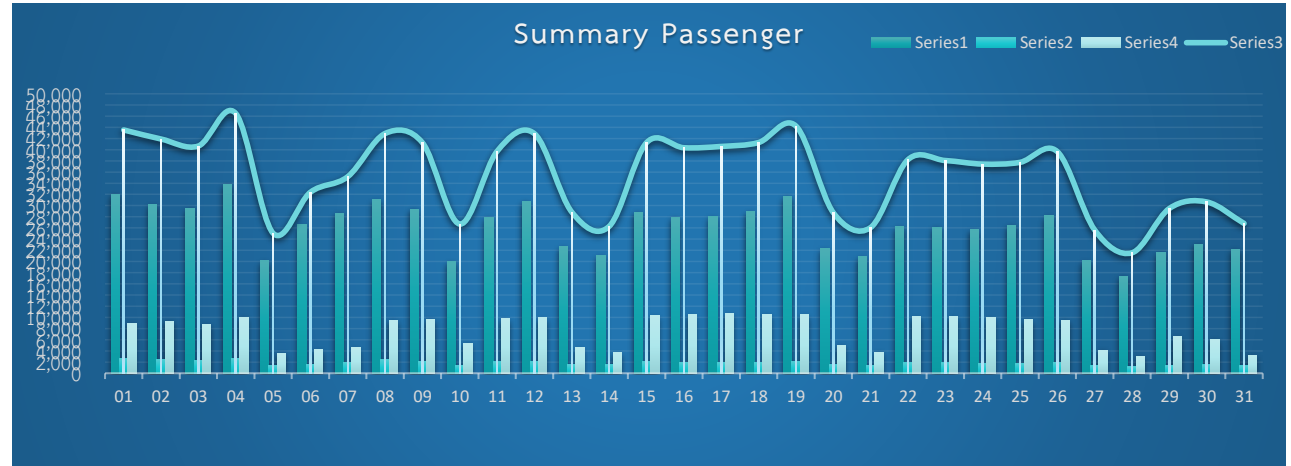
Date		Summary Passenger			
		North Line	West Line	GATE EMV KTB	Total
Sat	01-Nov-25	25,991	2,020	3,992	32,003
Sun	02-Nov-25	24,811	1,880	3,209	29,900
Mon	03-Nov-25	33,357	2,670	7,609	43,636
Tue	04-Nov-25	32,568	2,619	7,722	42,909
Wed	05-Nov-25	36,921	2,733	7,828	47,482
Thu	06-Nov-25	32,710	2,545	7,753	43,008
Fri	07-Nov-25	40,491	3,041	6,989	50,521
Sat	08-Nov-25	32,481	2,329	3,394	38,204
Sun	09-Nov-25	23,497	1,837	2,584	27,918
Mon	10-Nov-25	33,054	2,624	7,408	43,086
Tue	11-Nov-25	32,015	2,559	7,539	42,113
Wed	12-Nov-25	31,996	2,604	7,308	41,908
Thu	13-Nov-25	32,821	2,577	7,568	42,966
Fri	14-Nov-25	35,664	2,745	7,524	45,933
Sat	15-Nov-25	25,530	1,850	3,558	30,938
Sun	16-Nov-25	23,416	1,815	3,027	28,258
Mon	17-Nov-25	32,377	2,577	7,297	42,251
Tue	18-Nov-25	31,223	2,540	7,328	41,091
Wed	19-Nov-25	31,852	2,530	7,428	41,810
Thu	20-Nov-25	35,045	2,724	7,535	45,304
Fri	21-Nov-25	38,880	2,890	7,735	49,505
Sat	22-Nov-25	24,804	1,938	3,575	30,317
Sun	23-Nov-25	22,079	1,742	2,880	26,701
Mon	24-Nov-25	32,526	2,725	7,285	42,536
Tue	25-Nov-25	32,107	2,656	7,680	42,443
Wed	26-Nov-25	32,183	2,651	7,598	42,432
Thu	27-Nov-25	32,203	2,695	7,599	42,497
Fri	28-Nov-25	36,130	2,961	7,734	46,825
Sat	29-Nov-25	25,757	1,930	4,043	31,730
Sun	30-Nov-25	23,096	1,827	3,268	28,191
Total		927,585	72,834	183,997	1,184,416



Red Line : Passenger Report December 2025



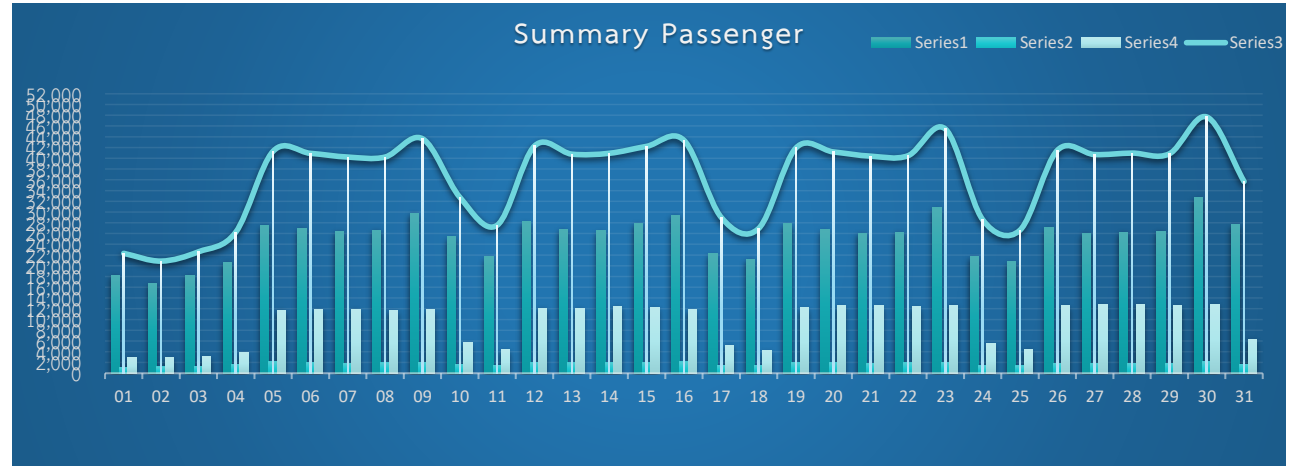
Date		Summary Passenger			
		North Line	West Line	GATE EMV KTB	Total
Mon	01-Dec-25	32,072	2,572	8,888	43,532
Tue	02-Dec-25	30,118	2,463	9,325	41,906
Wed	03-Dec-25	29,473	2,374	8,808	40,655
Thu	04-Dec-25	33,851	2,646	9,981	46,478
Fri	05-Dec-25	20,110	1,426	3,511	25,047
Sat	06-Dec-25	26,529	1,633	4,225	32,387
Sun	07-Dec-25	28,633	2,015	4,531	35,179
Mon	08-Dec-25	31,022	2,395	9,481	42,898
Tue	09-Dec-25	29,382	2,178	9,682	41,242
Wed	10-Dec-25	19,912	1,441	5,339	26,692
Thu	11-Dec-25	27,910	2,039	9,787	39,736
Fri	12-Dec-25	30,779	2,154	9,925	42,858
Sat	13-Dec-25	22,681	1,591	4,548	28,820
Sun	14-Dec-25	21,072	1,556	3,657	26,285
Mon	15-Dec-25	28,852	2,108	10,299	41,259
Tue	16-Dec-25	27,916	2,000	10,428	40,344
Wed	17-Dec-25	28,010	1,929	10,643	40,582
Thu	18-Dec-25	28,861	1,920	10,498	41,279
Fri	19-Dec-25	31,641	2,156	10,440	44,237
Sat	20-Dec-25	22,265	1,526	4,943	28,734
Sun	21-Dec-25	20,830	1,465	3,775	26,070
Mon	22-Dec-25	26,222	1,898	10,099	38,219
Tue	23-Dec-25	26,100	1,852	10,107	38,059
Wed	24-Dec-25	25,719	1,790	9,913	37,422
Thu	25-Dec-25	26,418	1,770	9,542	37,730
Fri	26-Dec-25	28,209	1,979	9,465	39,653
Sat	27-Dec-25	20,120	1,386	4,122	25,628
Sun	28-Dec-25	17,365	1,204	2,986	21,555
Mon	29-Dec-25	21,539	1,426	6,520	29,485
Tue	30-Dec-25	23,121	1,490	6,035	30,646
Wed	31-Dec-25	22,198	1,352	3,255	26,805
Total		808,930	57,734	234,758	1,101,422



Red Line : Passenger Report January 2026



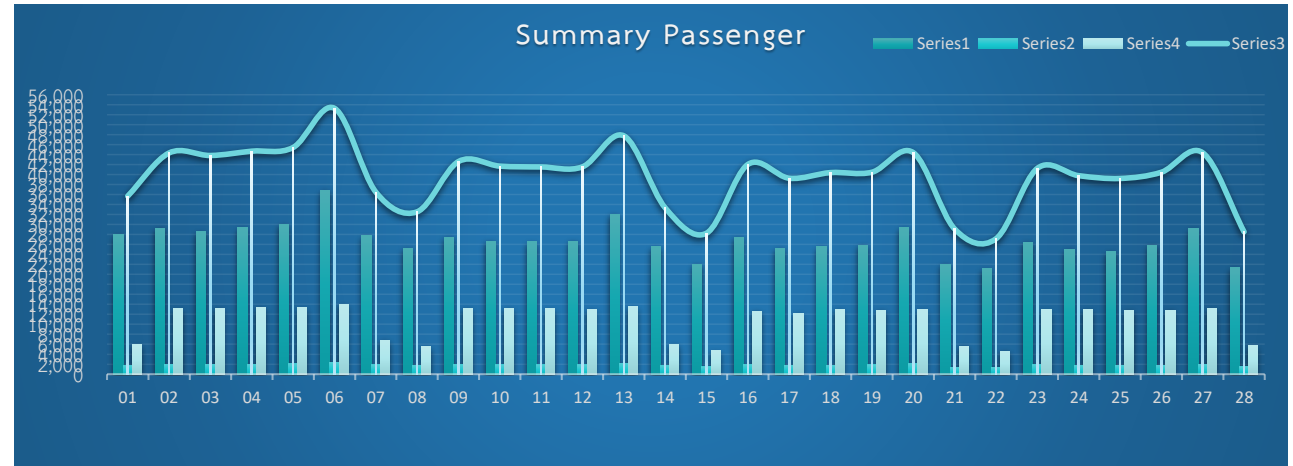
Date		Summary Passenger			
		North Line	West Line	GATE EMV KTB	Total
Thu	01-Jan-26	18,279	1,101	2,932	22,312
Fri	02-Jan-26	16,769	1,188	2,910	20,867
Sat	03-Jan-26	18,190	1,307	3,097	22,594
Sun	04-Jan-26	20,698	1,700	3,850	26,248
Mon	05-Jan-26	27,438	2,115	11,755	41,308
Tue	06-Jan-26	26,958	2,016	11,945	40,919
Wed	07-Jan-26	26,464	1,862	11,903	40,229
Thu	08-Jan-26	26,623	1,938	11,672	40,233
Fri	09-Jan-26	29,795	2,066	11,775	43,636
Sat	10-Jan-26	25,385	1,708	5,656	32,749
Sun	11-Jan-26	21,646	1,533	4,365	27,544
Mon	12-Jan-26	28,185	2,021	12,080	42,286
Tue	13-Jan-26	26,762	1,936	12,072	40,770
Wed	14-Jan-26	26,527	1,938	12,461	40,926
Thu	15-Jan-26	27,960	1,985	12,275	42,220
Fri	16-Jan-26	29,423	2,112	11,821	43,356
Sat	17-Jan-26	22,210	1,535	5,260	29,005
Sun	18-Jan-26	21,208	1,492	4,223	26,923
Mon	19-Jan-26	27,795	1,962	12,158	41,915
Tue	20-Jan-26	26,676	1,950	12,561	41,187
Wed	21-Jan-26	26,032	1,833	12,529	40,394
Thu	22-Jan-26	26,195	1,937	12,340	40,472
Fri	23-Jan-26	30,767	2,090	12,605	45,462
Sat	24-Jan-26	21,678	1,428	5,476	28,582
Sun	25-Jan-26	20,757	1,389	4,481	26,627
Mon	26-Jan-26	27,037	1,893	12,548	41,478
Tue	27-Jan-26	26,013	1,824	12,854	40,691
Wed	28-Jan-26	26,267	1,847	12,852	40,966
Thu	29-Jan-26	26,444	1,840	12,551	40,835
Fri	30-Jan-26	32,690	2,164	12,833	47,687
Sat	31-Jan-26	27,608	1,718	6,356	35,682
Total		786,479	55,428	294,196	1,136,103



Red Line : Passenger Report February 2026



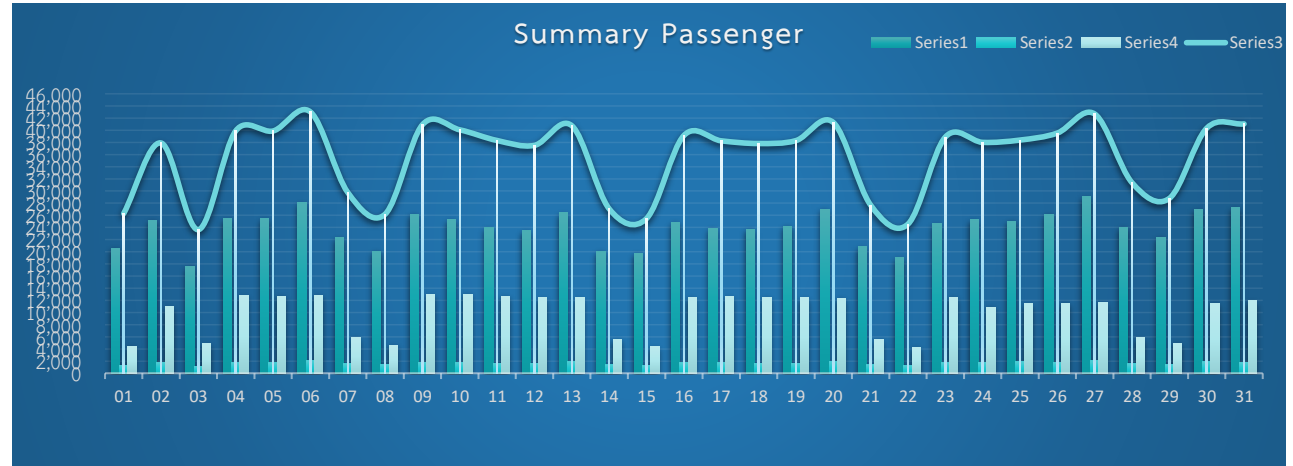
Date		Summary Passenger			
		North Line	West Line	GATE EMV KTB	Total
Sun	01-Feb-26	28,055	1,726	5,904	35,685
Mon	02-Feb-26	29,228	2,012	13,087	44,327
Tue	03-Feb-26	28,526	2,032	13,264	43,822
Wed	04-Feb-26	29,314	1,995	13,382	44,691
Thu	05-Feb-26	30,054	2,071	13,302	45,427
Fri	06-Feb-26	36,854	2,432	13,999	53,285
Sat	07-Feb-26	27,767	1,896	6,844	36,507
Sun	08-Feb-26	25,233	1,805	5,507	32,545
Mon	09-Feb-26	27,439	1,988	13,189	42,616
Tue	10-Feb-26	26,601	1,865	13,225	41,691
Wed	11-Feb-26	26,511	1,870	13,150	41,531
Thu	12-Feb-26	26,686	1,873	13,001	41,560
Fri	13-Feb-26	32,058	2,195	13,512	47,765
Sat	14-Feb-26	25,528	1,746	6,053	33,327
Sun	15-Feb-26	22,066	1,494	4,702	28,262
Mon	16-Feb-26	27,446	1,962	12,633	42,041
Tue	17-Feb-26	25,289	1,823	12,154	39,266
Wed	18-Feb-26	25,584	1,822	12,994	40,400
Thu	19-Feb-26	25,823	1,860	12,791	40,474
Fri	20-Feb-26	29,355	2,088	12,954	44,397
Sat	21-Feb-26	22,054	1,403	5,647	29,104
Sun	22-Feb-26	21,089	1,408	4,645	27,142
Mon	23-Feb-26	26,421	1,941	12,887	41,249
Tue	24-Feb-26	25,043	1,768	12,969	39,780
Wed	25-Feb-26	24,551	1,835	12,834	39,220
Thu	26-Feb-26	25,834	1,823	12,811	40,468
Fri	27-Feb-26	29,188	2,030	13,154	44,372
Sat	28-Feb-26	21,315	1,531	5,677	28,523
Total		750,912	52,294	306,271	1,109,477



Red Line : Passenger Report March 2026



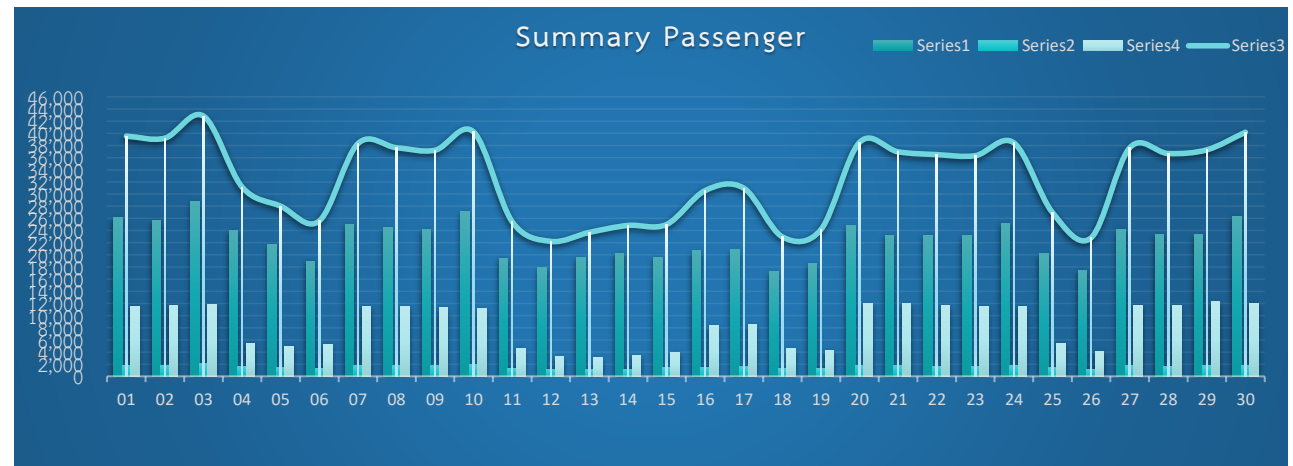
Date		Summary Passenger			
		North Line	West Line	GATE EMV KTB	Total
Sun	01-Mar-26	20,535	1,344	4,404	26,283
Mon	02-Mar-26	25,161	1,800	10,943	37,904
Tue	03-Mar-26	17,619	1,184	4,825	23,628
Wed	04-Mar-26	25,397	1,759	12,746	39,902
Thu	05-Mar-26	25,452	1,739	12,687	39,878
Fri	06-Mar-26	28,081	2,068	12,863	43,012
Sat	07-Mar-26	22,293	1,583	5,880	29,756
Sun	08-Mar-26	20,098	1,470	4,617	26,185
Mon	09-Mar-26	26,181	1,828	12,905	40,914
Tue	10-Mar-26	25,293	1,782	12,988	40,063
Wed	11-Mar-26	23,962	1,669	12,678	38,309
Thu	12-Mar-26	23,435	1,672	12,406	37,513
Fri	13-Mar-26	26,381	1,959	12,406	40,746
Sat	14-Mar-26	20,104	1,400	5,552	27,056
Sun	15-Mar-26	19,789	1,313	4,362	25,464
Mon	16-Mar-26	24,878	1,754	12,504	39,136
Tue	17-Mar-26	23,899	1,728	12,631	38,258
Wed	18-Mar-26	23,695	1,672	12,446	37,813
Thu	19-Mar-26	24,189	1,681	12,427	38,297
Fri	20-Mar-26	26,979	1,956	12,352	41,287
Sat	21-Mar-26	20,788	1,409	5,483	27,680
Sun	22-Mar-26	19,005	1,284	4,263	24,552
Mon	23-Mar-26	24,661	1,746	12,468	38,875
Tue	24-Mar-26	25,288	1,811	10,908	38,007
Wed	25-Mar-26	25,027	1,910	11,448	38,385
Thu	26-Mar-26	26,191	1,806	11,535	39,532
Fri	27-Mar-26	29,019	2,073	11,587	42,679
Sat	28-Mar-26	23,987	1,532	5,841	31,360
Sun	29-Mar-26	22,410	1,445	4,934	28,789
Mon	30-Mar-26	26,937	1,888	11,514	40,339
Tue	31-Mar-26	27,296	1,801	11,942	41,039
Total		744,030	52,066	306,545	1,102,641



Red Line : Passenger Report April 2026



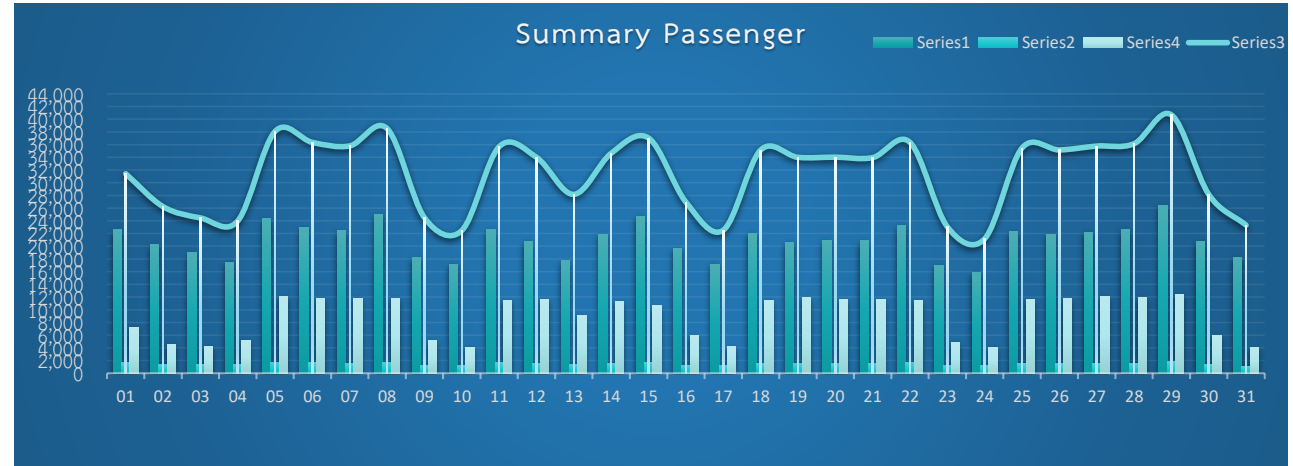
Date		Summary Passenger			
		North Line	West Line	GATE EMV KTB	Total
Wed	01-Apr-26	26,147	1,853	11,538	39,538
Thu	02-Apr-26	25,715	1,820	11,675	39,210
Fri	03-Apr-26	28,859	2,103	11,879	42,841
Sat	04-Apr-26	24,087	1,619	5,456	31,162
Sun	05-Apr-26	21,767	1,394	4,850	28,011
Mon	06-Apr-26	18,966	1,368	5,243	25,577
Tue	07-Apr-26	24,973	1,777	11,546	38,296
Wed	08-Apr-26	24,476	1,716	11,446	37,638
Thu	09-Apr-26	24,202	1,715	11,305	37,222
Fri	10-Apr-26	27,165	1,961	11,093	40,219
Sat	11-Apr-26	19,441	1,351	4,646	25,438
Sun	12-Apr-26	17,884	1,136	3,195	22,215
Mon	13-Apr-26	19,554	1,051	3,090	23,695
Tue	14-Apr-26	20,288	1,133	3,421	24,842
Wed	15-Apr-26	19,634	1,387	3,979	25,000
Thu	16-Apr-26	20,693	1,507	8,381	30,581
Fri	17-Apr-26	20,831	1,581	8,567	30,979
Sat	18-Apr-26	17,184	1,265	4,512	22,961
Sun	19-Apr-26	18,548	1,310	4,306	24,164
Mon	20-Apr-26	24,757	1,841	11,917	38,515
Tue	21-Apr-26	23,267	1,751	11,932	36,950
Wed	22-Apr-26	23,209	1,676	11,615	36,500
Thu	23-Apr-26	23,130	1,660	11,534	36,324
Fri	24-Apr-26	25,171	1,775	11,480	38,426
Sat	25-Apr-26	20,178	1,384	5,395	26,957
Sun	26-Apr-26	17,504	1,178	4,118	22,800
Mon	27-Apr-26	24,203	1,716	11,693	37,612
Tue	28-Apr-26	23,415	1,641	11,613	36,669
Wed	29-Apr-26	23,302	1,734	12,248	37,284
Thu	30-Apr-26	26,317	1,819	12,049	40,185
Total		674,867	47,222	255,722	977,811



Red Line : Passenger Report May 2026



Date		Summary Passenger			
		North Line	West Line	GATE EMV KTB	Total
Fri	01-May-26	22,571	1,621	7,221	31,413
Sat	02-May-26	20,333	1,304	4,603	26,240
Sun	03-May-26	18,936	1,352	4,175	24,463
Mon	04-May-26	17,448	1,327	5,207	23,982
Tue	05-May-26	24,324	1,708	12,058	38,090
Wed	06-May-26	22,921	1,618	11,802	36,341
Thu	07-May-26	22,450	1,570	11,773	35,793
Fri	08-May-26	24,986	1,718	11,821	38,525
Sat	09-May-26	18,197	1,200	5,092	24,489
Sun	10-May-26	17,171	1,193	4,109	22,473
Mon	11-May-26	22,567	1,636	11,480	35,683
Tue	12-May-26	20,824	1,550	11,625	33,999
Wed	13-May-26	17,745	1,347	9,067	28,159
Thu	14-May-26	21,861	1,542	11,234	34,637
Fri	15-May-26	24,659	1,773	10,601	37,033
Sat	16-May-26	19,701	1,268	5,980	26,949
Sun	17-May-26	17,173	1,170	4,174	22,517
Mon	18-May-26	22,027	1,584	11,515	35,126
Tue	19-May-26	20,577	1,525	11,891	33,993
Wed	20-May-26	20,981	1,501	11,539	34,021
Thu	21-May-26	20,835	1,525	11,589	33,949
Fri	22-May-26	23,201	1,720	11,435	36,356
Sat	23-May-26	17,014	1,178	4,874	23,066
Sun	24-May-26	15,944	1,163	4,060	21,167
Mon	25-May-26	22,328	1,578	11,553	35,459
Tue	26-May-26	21,896	1,520	11,739	35,155
Wed	27-May-26	22,176	1,544	12,051	35,771
Thu	28-May-26	22,706	1,478	11,950	36,134
Fri	29-May-26	26,426	1,826	12,438	40,690
Sat	30-May-26	20,731	1,415	6,013	28,159
Sun	31-May-26	18,214	1,108	3,999	23,321
Total		648,923	45,562	278,668	973,153



Red Line : Passenger Report June 2026



Date		Summary Passenger			Total
		North Line	West Line	GATE EMV KTB	
Mon	01-Jun-26	16,739	1,266	4,431	22,436
Tue	02-Jun-26	22,091	1,486	8,947	32,524
Wed	03-Jun-26	16,670	1,229	4,003	21,902
Thu	04-Jun-26	24,363	1,752	11,381	37,496
Fri	05-Jun-26	26,236	1,853	10,905	38,994
Sat	06-Jun-26	19,833	1,250	4,504	25,587
Sun	07-Jun-26	19,258	1,353	3,744	24,355
Mon	08-Jun-26	25,047	1,822	11,335	38,204
Tue	09-Jun-26	25,100	1,807	11,882	38,789
Wed	10-Jun-26	24,802	1,813	11,251	37,866
Thu	11-Jun-26	25,142	1,917	11,674	38,733
Fri	12-Jun-26	27,026	2,047	11,565	40,638
Sat	13-Jun-26	19,405	1,327	4,908	25,640
Sun	14-Jun-26	18,645	1,231	4,047	23,923
Mon	15-Jun-26	24,864	1,918	11,708	38,490
Tue	16-Jun-26	24,100	1,898	12,116	38,114
Wed	17-Jun-26	23,595	1,699	11,857	37,151
Thu	18-Jun-26	24,439	1,736	12,079	38,254
Fri	19-Jun-26	26,210	1,966	12,200	40,376
Sat	20-Jun-26	18,760	1,270	4,974	25,004
Sun	21-Jun-26	17,649	1,209	4,162	23,020
Mon	22-Jun-26	24,439	1,874	12,379	38,692
Tue	23-Jun-26	23,987	1,826	13,103	38,916
Wed	24-Jun-26	23,827	1,819	12,736	38,382
Thu	25-Jun-26	24,429	1,886	12,837	39,152
Fri	26-Jun-26	27,873	2,154	13,281	43,308
Sat	27-Jun-26	19,995	1,384	5,526	26,905
Sun	28-Jun-26	18,842	1,336	4,847	25,025
Mon	29-Jun-26	24,531	1,889	12,789	39,209
Tue	30-Jun-26	23,727	1,799	13,411	38,937
Total		681,624	49,816	284,582	1,016,022

